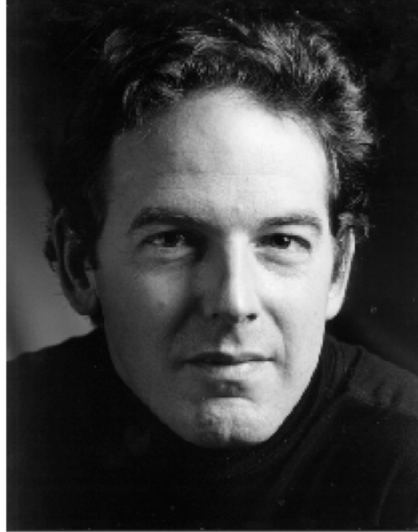


Tom Gutteridge



Curriculum Vitae

Contact

122 Fulham Rd, Alphington VIC 3078
ph/fax +613 9443 0034
mobile 0403 23 23 21
email tandango@optusnet.com.au
agent: International Casting Services (Belinda Maxwell) 02 9339 0255

Education/Scholarship

B.A. (Melbourne Uni) 1983
Dip. Arts in Drama (Victorian College of the Arts) 1985
Goethe Scholarship for Persons in Key Positions in the Arts (studied in Iserlohn, Germany for three months) 1994

External Council/Boards/Panels

2006-present Inaugural Board, PlayWriting Australia
2004-2008 Board, Stages – Western Australian Playwrights' Consortium (Chair 2007-08)
2005 Initiating Forum, The Committee for Perth (corporate and community cultural lobby group)
1997-2001 Curriculum Advisory Council, QUT Academy of the Arts
1999-2001 Industry Advisory Panel, Performing Lines

Employment History

Artistic Director, Union House Theatre, Melbourne University – 2008 to present

An engine room of student arts in Australia, Union House Theatre has helped nurture generations of playwrights, directors, performers and technicians. Union House Theatre engages students in a wide range of professionally-led performing arts experiences, as well as assisting with student-run productions and initiatives. Some of the household names who began their careers in student theatre at Melbourne University include Barrie Kosky, Cate Blanchett, Magda Szubanski, Santo Cilauro and Max Gillies. The organisation is dedicated to nurturing comparable talent through an innovative and rigorous program.

Role Description

Responsible for devising the annual program at UHT, directing its major productions, mentoring student theatre artists and providing professional advice to all groups using the University's theatres. The AD also represents UHT on a number of University and industry boards.

Artistic Director, Black Swan Theatre Company – 2004 to 2008.

Black Swan Theatre Company (BSTC) is the leading theatre company in Western Australia. Established in 1991 it has gained a national and international reputation for innovative productions such as *Cloudstreet* and *Bran Nue Dae*. It is now the State Flagship Theatre Company producing an annual subscription season of 7 shows ranging from new works to world classics.

During my tenure BSTC has been through a major transition from a 'Niche' company to a 'State Flagship' company (Australia Council for the Arts descriptions). It has also undergone a significant organisational restructure with the resolution of long-term management and financial control issues.

Role Description

Joint CEO with responsibility for all staff, budgets, organisational policy and strategy in consultation with General Manager, and with sole responsibility for all artistic policy, appointments and programming. Significant role in developing and maintaining corporate and sponsor relationships.

Achievements

Financial/Organisational

The company recorded surpluses in 2005, 2006 and 2007 (on the back of an increase in box-office of 280% since 2004). Paying audience numbers have tripled since 2004, with subscriptions increasing by a factor of four. BSTC now has a stable and sustainable management structure, clear internal and external policies and innovative communications strategies including the use of blogging and integrated online data bases.

Creative

The company has greatly increased its creative output; increasing mainhouse productions from 4 in 2004 to 7 programmed for 2008. BSTC's co-production of *The Odyssey* (with Malthouse Theatre) won 2 national Helpmann Awards in 2006, and the company has been regularly decorated at the WA Equity Guild Awards.

Development

In 2006 I initiated an emerging arts' program - The HotBed - which provides professional opportunities as well as unique training opportunities to outstanding new theatre makers. In late 2007 BSTC successfully secured a generous three year sponsorship for The HotBed making the program fully professional. Together with the Education Manager I also greatly expanded an effective education program.

Artistic Associate, Queensland Theatre Company – 1996 to 2001

Key artistic support staff for Robyn Nevin (96-98) and Michael Gow (98-01).

Role Description

Supported Artistic Director in programming, casting and policy development. Major responsibility for education program and website development (including initiating, planning and developing content for the inaugural site in 1997). Directed plays for mainstage and education program, tour directed other mainstage plays for national tours.

Achievements

Directed the award-winning world premiere production of *Vertigo and the Virginia* along with 9 other shows. Involved in research and development of QTC's proposal to government for a new theatre. Initiated the highly successful *MoDD*, a collaboration b/w QTC, Qld Ballet, Opera Qld and Qld Symphony to present school performances integrating the four artforms. Closely involved in establishing QTC's annual two-week festival of playreadings.

Artistic Co-ordinator, MTC – 1994 to 1996

Responsibility for artist liaison, casting co-ordination with directors, running auditions, managing agent and artist databases, managing casting budget, and negotiating and drafting all cast contracts. Also directed education productions for the company.

Credits

Directing

2004-2008

Division Street

The Female of the Species

Jandamarra (World Premiere)

Honour

The Messiah

The Crucible

Accidental Death of an Anarchist

The Carnivores (World Premiere)

A Midsummer Night's Dream

Ruby's Last Dollar (with Jeremy Sims)

Uncle Vanya

The Sound Garden

Tear from a Glass Eye

Proof

The Dischord Hunter (World Premiere)

1995-2003

Macbeth

Birthrights (World Premiere)

Company

The Sound Garden

The Sound Garden

Charitable Intent (World Premiere)

The Forest

Chilling and Killing My Annabel Lee

MoDD - The Dream

Explod-ed

The Sound Garden (World Premiere)

The Big Fridge

Vertigo & the Virginia (World Premiere)

The Blood and Thunder Adventure on

Hurricane Peak (World Premiere)

Sweet Panic (Australian Premiere)

Load-ed Stories

Oz Shorts

with Jennifer Flowers and Michael Futcher

Shades of Blue (World Premiere)

A Man For All Seasons

Mysteries (World Premiere)

Steve Tesich

Joanna Murray-Smith

Steve Hawke

Joanna Murray-Smith

Patrick Barlow

Arthur Miller

Dario Fo

Ian Wilding

Shakespeare

Reg Cribb

Chekhov – adapt. Reg Cribb

Montgomery/Roylance

Matt Cameron

David Auburn

Iain Grandage/Tom Gutteridge

Shakespeare/devised

David Williamson

Sondheim/Furth

Montgomery/Roylance

Montgomery/Roylance

David Williamson

Ostrovsky (adpt Ayckbourn)

Aidan Fennessy

devised - Tom Gutteridge

M Futcher/H Howard

Montgomery/Roylance

Sven Olsen

Sven Olsen

Margaret Mahy

(adapted Tom Gutteridge)

Stephen Poliakoff

devised Tom Gutteridge

various writers

Andrew Bovell

Robert Bolt

(adpt Meyrick/Gutteridge)

Tom Lindstrom

Victorian College of the Arts

Black Swan

Black Swan/Bunuba Films/PIAF

Black Swan

Black Swan

Black Swan

Black Swan

Black Swan

Black Swan

WAAPA

Black Swan/Pork Chop

Black Swan

Oz Opera

Black Swan – BSX Youth Theatre

Black Swan

WASO - EChO

MTC Education Program

MTC

Victorian College of the Arts

West Australian Opera

Opera Qld

Melbourne Festival/La Mama

QTC

QTC

QTC, OQ, QSO, Qballet

QTC Education

Opera Qld

QUT workshop prod

QTC

QTC/Out of the Box Festival

QTC

QTC Education

QTC

La Mama

MTC Education

La Mama

Acting

1991-1994

A Midsummer Nights Dream

Shakespeare

The Emperor's New Clothes

Melissa Reeves

The Crimson Island

Bulgakov

Vengeance

Evan P. Watts

The Misanthrope

Moliere

Titus

Shakespeare/

David Pledger

Geography

Ian Scott

On Top of the World

Michael Gow

Demetrius/ Flute

dir. Mike Bishop

Elston, Hocking & Woods

Emperor

dir. David Carlin

Arena Theatre

French

dir. Jean Pierre

ANT/Adelaide Festival

Ambassador

Mignon

Dumb Peter

dir. Richard Murphet

Whistling in the Theatre

Philante

dir. Greg Saunders

Actors and Punters

various

dir. Robert Draffin

Theatreworks/ Melbourne Festival

various

dir. Robert Draffin

Whistling in the Theatre

Marcus

dir. Robyn Nevin

MTC

Acting (Stage) 1986 - 1991

MTC - Bali: Adat, Twelfth Night, The Crucible (Education), A Servant of Two Masters

Whistling in the Theatre - A Thousand and One Nights, Jo, Joe and Dromio, Frankenstein, Ship of Fools, A

Night Outside, The Secret Garden, Woman in the Attic, Guilhem's Corporeus, The Sword in the Stone, The

Country of the Blind, Miscellanies: Secret H

Other - Angry Young Penguins (Joanna Murray-Smith, The Church), After Dinner (Andrew Bovell, La

Mama/Theatreworks/Universal), and more

Acting (TV and Film)

TV – Blood on the Sand (mini series), Prisoner, Prime Time, Newly Weds, Connor, Neighbours, etc.

Film - Aya, Father, The Criminal Court, Dive For Me

TVC – Cottee's Jam, Vic T.A.C. - The Drowning, S.A.T.A.C. - Drink Driving, Landrover Discovery, LA Gear

Dramaturgy and Script Assessment

Judge for Victorian Premier's Literary Awards 2003, assessor for Australian National Playwrights' Centre, Patrick White Award (STC) and George Landen Dann Award (QTC)

Music and Composing

Composed, arranged and recorded/played music for - **A Thousand and One Nights**, **Ship of Fools**, **The Sword in the Stone**, and **Jo, Joe and Dromio** (Whistling in the Theatre), **Angry Young Penguins** (The Church), **Twelfth Night** (MTC), **King Lear** (VCA), **Sons Of** (Tony Ayres, Swinburne FTV). Founding member of Glam Rock cult band, **The Melody Lords**.

Corporate Training

Change management workshops with Primed Change Consulting (2008-). Presentation and negotiation skills trainer for the Maura Fay Group (2001-2003) working in Australia, New Zealand, China and Japan. Clients included GE, Dept of Defence (Australia), Price Waterhouse Coopers, Walter and Eliza Hall Institute.

Teaching

VCA Extension Courses, guest tutor and lecturer at Edith Cowan University, WAAPA, QUT. Extensive workshop leadership for secondary and tertiary students through Education Programs at MTC, QTC and Black Swan Theatre Company. Workshops in Indigenous community at Fitzroy Crossing. 10 week intensive program in Cairns for JUTE Theatre Company.

Referees on request